




新加坡国际学校(香港)
 SINGAPORE INTERNATIONAL SCHOOL (HONG KONG)
 ESTD 1991

Lower Secondary Student Life Handbook 2022-2023

Academic Year 2022/2023 (AY2223) Term Dates

Term 1: 22 Aug 2022 - 6 Nov 2022

Term 2: 7 Nov 2022 - 5 Feb 2023

Term 3: 6 Feb 2023 - 23 Apr 2023

Term 4: 24 Apr 2023 - 27 Jun 2023

AY2223 Holidays and School Breaks

Date (Day)	Activity / Event
19 Aug 22 (Fri)	Orientation for Sec 1, DP1 and DP2 students, as well as new Preparatory Years (PY) and Primary Years (P1 - P6) students
22 Aug 22 (Mon)	First Day of School (for all students)
12 Sep 22 (Mon)	Public Holiday: Day after Mid-Autumn Festival
4 Oct 22 (Tue)	Public Holiday: Chung Yeung Festival
15 - 23 Oct 22 (Sat - Sun)	October Break
24 Oct 22 (Mon)	Staff Development Day I (No lessons for all students)
25 Oct 22 (Tue)	School Starts for all students after October Break (Term 1 week 9)
17 Dec 22 - 2 Jan 23 (Sat - Mon)	Christmas Break
3 Jan 23 (Tue)	School starts after Christmas Break (Term 2 week 7)
19 - 29 Jan 23 (Wed - Sun)	Chinese New Year (CNY) Break
30 Jan 23 (Mon)	School Starts for all students after CNY Break (Term 2 week 10)
3 Apr 23 (Mon)	Staff Development Day II (No lessons for all students)
4 - 11 Apr 23 (Tue - Tue)	Easter Break
12 Apr 23 (Wed)	School starts for all students after Easter Break (Term 3 week 9)
1 May 23 (Mon)	Public Holiday: Labour Day
26 May 23 (Fri)	Public Holiday: Buddha's Birthday
14 Jun 23 (Wed)	DP2 Graduation Ceremony
19 Jun 23 (Mon)	S4 Graduation Ceremony
20 Jun 23 (Tue)	Last Day of lessons for all students
21 Jun 23 (Wed)	PY2 Graduation Ceremony / P6 Graduation Ceremony
22 Jun 23 (Thu)	Public Holiday: Tuen Ng Festival
23, 26 & 27 Jun 23 (Fri, Mon - Tue)	Appointment Week
28 Jun - 20 Aug 23 (Wed - Sun)	Summer Holiday (For all students)
3 Jul - 14 Jul 23 (Mon - Fri)	Summer Programme
18 Aug 23 (Fri)	Orientation for new students
21 Aug 23 (Mon)	First Day of School for AY2324 for all students

For information:

1 Oct 22 (Sat)	Public Holidays: National Day of the People's Republic of China
25 - 27 Dec 22 (Sun - Tue)	Public Holidays: Christmas Day and the first weekday after Christmas
1 - 2 Jan 23 (Sun - Mon)	Public Holidays: New Year's Day and the Day after Public Holiday
22 - 25 Jan 23 (Sun - Wed)	Public Holidays: Lunar New Year
5 Apr 23 (Wed)	Public Holiday: Ching Ming Festival
7 - 10 Apr 23 (Fri - Mon)	Public Holidays: Good Friday, Holy Saturday and Easter Monday
1 Jul 23 (Sat)	Public Holiday: HKSAR Establishment Day

CONTENTS

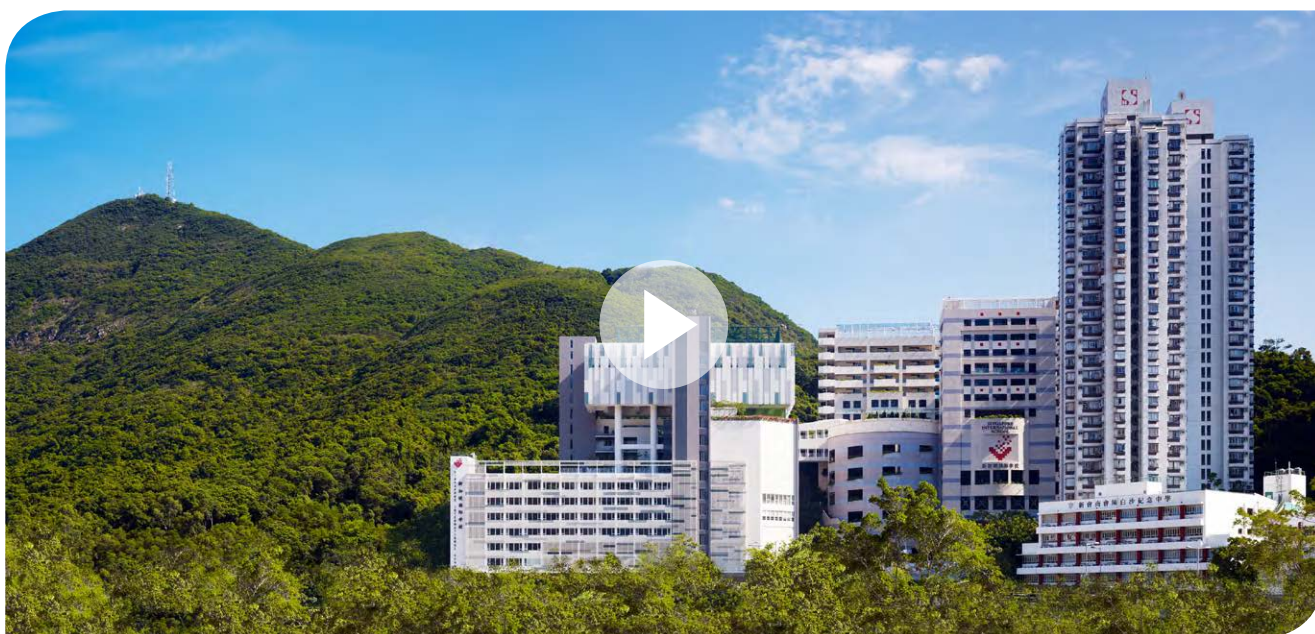
PART 1: WELCOME TO SISHK 2

PART 2: ACADEMIC PROGRAM 7

PART 3: STUDENT LIFE 17

PART 4: STUDENT WELLBEING 43

Take the  **Virtual tour!**



PART 1: WELCOME TO SISHK



Mr Tay, Hsien Chuan Kelvin, Principal

Dear Secondary 1 and 2 Parents and Students,

We would like to take this opportunity to welcome our new students and their families to our SISHK Family, especially our Primary 6 students who are transiting to a Secondary 1 school life. For the rest of our existing students and their parents, thank you for your trust in our education and strong support. We hope that this specially designed Student Life e-book for Secondary 1 and 2 students will offer useful and relevant information to guide our students to navigate their Lower Secondary school life with ease and success.

In SISHK, we want to enrich our students' growth and learning development in the Moral, Social, Physical, Aesthetic, Cognitive and Emotional (M-SPACE) domains of learning to the fullest through our curricular, co-curricular and student leadership experiences at the Secondary section. These multi-faceted experiences will form part of our student life at the Lower Secondary levels.

We would be grateful if you could make time to browse through and internalise some of the information, especially policies and guidelines so that our students know what to expect and will act in a respectful and responsible manner. We hope that our students will live out our values and be part of this vibrant community striving for excellence.

We wish our students a great year ahead as they make progress in their learning and growth as well as experience success in their endeavours in SISHK





**Mrs Cheng, Vanessa Vice-Principal
(Secondary Education Programme)**

A very warm welcome to the new academic year at Singapore International School (Hong Kong). Here at SISHK, we take pride in being a caring community, providing a conducive environment for a future-oriented, holistic education. Everything that we do revolves around our school values of respect, responsibility, resilience, integrity, care and harmony (3RICH). Our students are strongly encouraged to strive for excellence, as well as lead and grow, guided by sound values. The vibrancy of our school programmes, leadership groups and co-curricular activities are testament to the dedication and legacies of our students and staff and truly reflects our school motto, 'Success Inspires Success'. We hope this is where all of you will be able to find your place, discover your unique strengths, and grow in confidence to take on and overcome any challenges.



**Mr Soon, Alvin Vice-Principal
(IB Diploma Programme)**

Welcome to Singapore International School (Hong Kong)!!

Referring to the school motto, "Success Inspires Success", I urge all students to boldly step out of your comfort zone and experience the richness of the student life that exists around you – in the clubs, Houses and many other activities organised throughout the year. I strongly encourage you to be a participant in the creation of memories and legacies in this school. The School is a place that is meant for you to live your life, to study and to learn.

This handbook is designed to be a guide to assist you in navigating the rich student life at the School. It includes information, policies and other valuable information for student leadership groups.

At the end of the two years of the Lower Secondary Programme, we aim for all students to learn to lead yourself well. If you have any questions, please ask. There will always be someone who is willing to lend a helping hand, a shoulder for you to lean on and a listening ear to your happiness and sorrow.

SCHOOL VISION AND MISSION

Everything we do here at SISHK is guided by our school's vision, mission and values. They provide a compass and direction to define who we are and how we operate.

MISSION

To provide a conducive environment for a future-oriented, holistic education, anchored in a rigorous bilingual academic programme, for children of all nationalities. We nurture students to be independent life-long learners imbued with sound moral values who are respectful and responsible, and who rise to the challenges of life creatively and enthusiastically in an ever-changing world.



VISION

A vibrant community striving for excellence.

SCHOOL MOTTO

Success Inspires Success

The School motto serves as a constant reminder to the school community of students and teachers that small successes will motivate the individual to strive for greater achievements.

SCHOOL PHILOSOPHY

We respect the dignity and worth of all the students under our care. We believe that all students can be nurtured to achieve their full potential within a school environment that is both caring and challenging. We expect all students to be respectful, responsible and to rise to the challenges of life.

SCHOOL VALUES

The school's values are based on 3RICH.



AWARDS AND SCHOLARSHIPS

SISHK SCHOLARSHIPS



My name is Mr Ron Tan and I lead the Scholarship and Talent Development programme at SISHK. Students in Primary 6 (P6) and Secondary 2 (S2) who will continue their Secondary education at SISHK can apply for a SISHK Scholarship, in recognition of their exceptional performance in both curricular and co-curricular aspects, and as part of our efforts to encourage students to continue to strive for excellence.

If you would like to contact me to discuss any scholarships or talent development awards please email tanron@singapore.edu.hk

SCHOLARSHIP INCENTIVES

1. Successful applicants will each receive a full or partial scholarship with a sum of up to HK\$50,000 that is tenable for one or two years.
2. To continue to develop their leadership qualities as well as to nurture a heart for the community, all Scholarship holders will be expected to initiate and lead school-based and/or community projects and represent the school at special events.

Selection Criteria

Applicants must satisfy the following criteria: -

- (a) Indicated intentions to continue their Secondary education at SISHK;
- (b) Achieved academic excellence and displayed consistency in his/her academic performance over the years;
- (c) Demonstrated strong leadership qualities and made significant contribution in their CCAs; and
- (d) Consistently showed excellent conduct in class and school and is a good role model.



SISHK TALENT DEVELOPMENT AWARDS

Secondary 1 (S1) and S2 students who will continue their education at SISHK can apply for a SISHK Talent Development Award, in recognition of their exceptional performance in a specialised area of talent, and as part of our efforts to encourage our students to continue to strive for excellence.



1. Successful applicants will each receive a one-time cash award of up to HK\$10,000 that is tenable for review every 2 years, subject to satisfactory performance.
2. As part of the school's commitment to develop our talented students, a Talent Development awardee can receive the Talent Development Award up to three times in the 6 years of education at SISHK upon meeting the selection criteria at the discretion of the specialised Department. This means that a Talent Awardee can look forward to the school's sponsorship totalling a maximum of \$30,000 to support the development of his/her talent.
3. To continue to develop their specialised talent as well as to nurture a heart for the community, all Awardees will be expected to initiate and lead school-based and/or community projects and represent the school at special events.



Selection Criteria

Applicants must satisfy the following criteria: -

- (a) Indicated intentions to continue their Secondary education at SISHK;
- (b) Exceptional excellence in at least one of the following categories:
 1. Cognitive Talent (e.g. subject talent in Maths)
 2. Leadership Talent in Contribution to the Community
 3. Aesthetics Talent (Performance Arts, Visual Arts)
 4. Physical Talent (Individual or Team Sports)
 5. Other Talents
- (c) Consistently showed excellent conduct in class and school and is a good role model.

Students talents are developing at SISHK through the

SISHK 3-Tier Level of Service



PART 2: ACADEMIC PROGRAMME

Our Secondary One and Two curriculum is modelled after the rigorous Singapore syllabus. It is aligned to the Singapore lower secondary curriculum and is adapted to the Hong Kong SAR context. We offer a range of subjects to help our students to build a strong academic foundation and acquire the necessary knowledge, skills, attitudes and values for progression to the next level.

The Singapore education system is often regarded as one of the best in the world with students in Singapore coming top in mathematics and science in worldwide benchmarking tests such as Programme for International Student Assessments (PISA) and Trends in International Mathematics and Science Study (TIMSS).

A TYPICAL DAY IN LOWER SECONDARY

	0	1	2	3	4	5	6	7	8	9	10
Monday	8:00- 8:30	8:30- 9:10	9:10- 9:50	9:50- 10:20	10:20- 11:00	11:00- 11:40	11:40- 12:20	12:20- 13:00	13:00- 13:40	13:40- 14:20	14:20- 15:00
	FTI	Music		Recess	Maths		Lunch	PE	PC	Chinese	

ATTENDANCE AND PUNCTUALITY

Students should arrive on time ready for FTI at 8am each day, all students will be marked as late after 8.05am. Should a student arrive at school after 8.30am, they are required to sign in at the General Office on the 3rd Floor of the Secondary Section Campus. The student will then be marked as late.

In the event that a student is unable to attend school or co-curricular activities because of illness or any other reason, parents should notify the student's Form Tutor(s) (FT) via email stating the reason for absence.

In the case of a planned absence, the school should be informed well in advance (email: secondary@singapore.edu.hk and the Form Tutor) and these absences will be recorded accordingly.



DEPARTING SCHOOL EARLY

Should a student be required to leave school early, a parent/guardian is required to email the Form Tutor(s) in advance (at least 24 hours). Students are required to inform their Subject Teachers and on the day and sign out at the General Office on the 3rd Floor of the Secondary Section Campus. Students are responsible for completing any class work missed and homework assigned to the deadlines set.

SECONDARY 1 ORIENTATION

Secondary 1 Orientation is an opportunity for incoming secondary students to get to know their peers, teachers and the school. Delivered by students under the Peer Support Program, new S1 students will learn about School Life at SISHK including; the school day, community, engage in team building activities and meet their subject teachers and form tutors



SISHK STUDENT LIFE

LOWER SECONDARY ACADEMIC PROGRAMME

Languages	English Language First Language Chinese / Chinese Language / Chinese as a Second language
Humanities	History Geography
STEM subjects	Mathematics Science Information and Communication Technology
Aesthetics and Physical Education	Art Music Physical Education
School-based subject	Character and Global Citizenship Education, including Education and Career Guidance

Most departments will communicate with students via Google Classroom, where a wealth of resources will be available to support students' learning.



S1 CURRICULUM



S2 CURRICULUM



English:

The Lower Secondary curriculum is designed to provide a foundation in English language and literature in order to prepare students for the Cambridge IGCSE courses (First Language English and World Literature). Across the two years, students will be exposed to prose, poetry, drama and non-fiction and will be asked to respond to these texts in a variety of ways. In addition, students will be exposed to a variety of texts to help build reading comprehension skills, summary skills and language awareness, which will be beneficial for IGCSE First Language English in the future. Our S2 learning objectives build on those targeted at S1 level.

Mathematics:

Our Lower Secondary Mathematics curriculum aims to help students acquire basic mathematical concepts and skills for continuous learning and supporting learning in other subjects. It helps to develop logical mathematical reasoning and communication skills. Students will learn to use Mathematics as a means of communication with emphasis on the clarity of expressions. The course also aims to develop student's thinking skills and problem-solving heuristics, so as to build confidence and foster interest in Mathematics. Students should have acquired a strong foundation in arithmetic, algebra, geometry, statistics and probability after going through the two year course and are well-prepared for the IGCSE curriculum.



Chinese Language:

中一、二华文（一语）为校本课程，是衔接小学与 IGCSE、IBDP 课程的重要桥梁。本课程侧重语文基础知识的积累与巩固，以单元为基本框架，带领学生研读诗歌、散文、小说等文体的名家作品，讨论时事新闻，以及学习不同体裁的非文学文本和基础文言文。同时，华文课堂亦会就一些文化课题进行探究式学习，并举办班级朗诵比赛、戏剧演出等活动，培养学生的听说读写、独立思考以及自主学习的能力。

中一、二华文近母语课程，是衔接小学与 IGCSE、IB 考试的重要桥梁。本课程侧重语文基础知识的建构与巩固，以单元为基本框架，通过学习一系列文学与非文学作品，并结合真实情境下的多元化形成性评估，全面提升学生的听说读写各项能力，同时培养学生对语言概念及所学主题的认知。此外，课程亦会以小组合作式的学习方式对若干文化课题进行探究，以深化学生对语言和文化的理解，并加强学生的思维、沟通及社交能力。



Sciences:

In S1 science lessons, students will be learning integrated science similar to the science they learn in Primary school. S2 science is split into 3 disciplines - Biology, Chemistry and Physics. It will be taught by 3 specialised teachers to prepare students eventually for IGCSE at the end of S4. Every year, after the end-of-year examination, S2 science will be conducting inquiry experiments to find out more about phenomena that they are curious about. As part of the post-exam activity, students will work in groups to create their best presentation to showcase their research.



Geography:

At S1, our students will examine the impact of human activities on places, natural resources, and communities. They will learn how Geographers formulate questions to carry out investigations. They will learn how to analyse and interpret data from a variety of primary and secondary sources such as graphs, maps, and photographs. During S2, our students will build on the skills and concepts they have been introduced to in S1. They will be looking at how humans have settled on the planet and how human societies impact the environment and in turn how the environment impacts us. The two major topics will be Population and settlement followed by Natural hazards. Both of these topics highlight the interconnection between the physical features of the earth and the communities living here as well as allowing students to understand these complexities. In addition to these, the students will also be revisiting map skills to develop their map reading abilities.

History:

For S1, a thematic approach on the study of Colonialisation, structured along key historical concepts is adopted, providing students with a grounding of fundamental historical concepts and skills for the study of History at the higher levels. The historical skills for the level focus on comprehending and inferring of sources, as well as researching and using evidence to write short historical accounts and structured essays. For S2, a chronological-thematic approach is used to explore different aspects of conflict. Case studies from the 20th Century are used and our students will focus on source analysis and writing multi-causal accounts supported with evidence. These case studies will provide our students with both contextual knowledge and skills in preparation for further study of History at higher levels. Our students will be taught the skills of causal reasoning and compare and contrast. They will need to evaluate sources in document-based case studies, analyse essay questions and write an evidence-based account of their inquiry.

To gain more information about Geography and History, check out the Humanities video



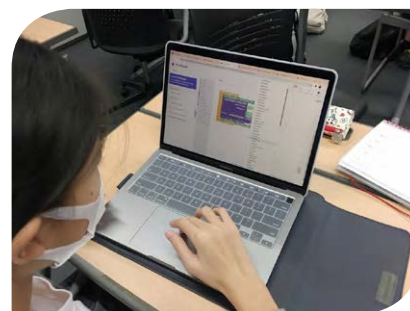
Humanities



ICT:



Both years ensure students are comfortable using the technology available to them everyday to complete tasks, communicate and stay safe online. Students are given the opportunity to express their creativity and produce digital artifacts in topics such as video editing studied within S1 and website development in S2. Students are also guided in developing their practical ability to develop their own technology when studying scratch game development and app development within S1 and python programming within S2. Finally, both levels develop their technical knowledge of how modern technology functions internally as well as how modern technology is applied within society and industry.



Visual Arts:



Our S1 students will embark on a more academic study of the discipline by visiting the Elements of Art (EOA) and Principles of Design (POD) and various media through structured exercises and termly projects. Over the 2 years, they are exposed to a variety of different forms of Art. In addition, the creative process is emphasized on. Our students are encouraged to not only master the basics in controlling a media, but also to think creatively and imaginatively. Our S2 students embark on an academic study of the discipline by visiting the Elements of Art (EOA) and Principles of Design (POD) and various media through structured exercises and termly projects. Over the 2 years in S1 and S2, our students are exposed to a variety of different forms of Art. In addition, the creative process is emphasised on. They are encouraged not only to master the basics in controlling a media, but also to think creatively and imaginatively



Music:



Students explore music as performers, composers and informed listeners. They create, understand and appreciate music from different cultures, times and places, helping them to develop leadership and collaboration skills as well as self-confidence.



Students:

- cultivate a joy of music through participating in meaningful and enjoyable experiences
- develop the knowledge, skills and attitudes necessary to contribute as musicians
- collaborate with others in purposeful and expressive ways through singing and playing instruments
- nurture their individual and collective creativity
- use their growing knowledge to explore and generate music that is unique, relevant and valuable.

Physical Education:



Students will learn how to explain and execute basic-intermediate sport skills, strategies, concepts, movement sequences, and movement patterns within volleyball, basketball, badminton, gymnastics, netball, and athletics during modified or small sided game and practice situations. In regards to their health and fitness, students will learn about how to improve their agility, coordination, reaction time, speed, power, endurance, strength, flexibility, across many physical activities and sports while incorporating training principles. These experiences will grant our students opportunities to further enhance and develop their self-management, social-management, and social awareness to further maximise the performance, confidence, and safety of themselves and others.



IGCSE SUBJECT SELECTION

To be promoted to Secondary 3 (S3), S2 students are required to obtain a pass in English and overall academic profile percentage of 55%, which is calculated using the average of 7 subjects, namely; Mathematics, English, Chinese, Sciences, History, Geography and Art

Students who do not meet the promotion criteria will be considered on a case-by-case basis, and may be offered provisional promotion to S3 with further monitoring.



KEY DATES

Event/Item	Timeline
IGCSE Course Selection Briefings (Student and Parent)	Mid February- Early April
Selection of iGCSE Subjects	Mid-late April
Release of S2 EOY Report	Mid June
Deadline for Subject Combination appeal	Late June
Results of appeal request	Last day of June
Release of S2 IGCSE Subject groupings	Mid August
Window period for dropping subjects	Mid August-Early September

POTENTIAL IGCSE PATHWAYS

Students have the option (grade dependent) to select either the CORE programme, consisting of the 8 subjects identified below or should they meet the entry requirements, students may opt to take an additional 9th or 10th subject.

CORE Subjects	Subject 1	First Language English
	Subject 2	World Literature
	Subject 3	CL1 or CL2
	Subject 4	Mathematics
	Subject 5	Additional Mathematics
	Subject 6	Chemistry
	Subject 7	Choose 1 (Economics, History or Geography)
	Subject 8	Choose 1 (Art, Music, ICT or Computer Science)
Electives	Option 1	a. History or Geography (only if you choose Economics) b. Physics/Biology
	Option 2	Physics/Biology

Some of the subjects at iGCSE have entry requirements. This is to ensure that the student will be able to cope with the demands and rigour of the subject or combination of subjects.

10 Subjects	Triple Science (Chem+Bio+Phy) -70% overall, 70% EL, 75% Maths, 75% Science Triple Humanities (WL + ECons + Hist/Geog) -70% Overall, 70% EL, 75% History/Geography + Consultation with Form teachers and Subject teachers
Art and Design	At least Grade B in Lower Secondary Art AND assessment by the Art Teacher
Music	ABRSM: Grade 3 (or above) in Practical AND Music Theory or Assessment by the Music Teacher

INTERNAL ASSESSMENT AND GRADING

Students will receive formal assessment grades 3 times a year with each making up a proportion of the end of year grade.

CA1 Assessment	CA2 Assessment	End of Year Assessment
30%	30%	40%

Within the various academic subjects, a range of different assessments will be undertaken which may include individual or group projects, timed tests, practical assessments and oral assessments. Students undertake EOY examinations across a range of subjects in early June.

Throughout the year within any given week, a student will have a maximum of 5 assessments/tests and within any day, the number will not exceed 3.

Students will receive report cards 3 times a year.

CA1 Report Card	CA2 Report Card	End of Year Report Card
February	Early May	Late June

Students in S1 and S2 are graded using a standardised grading system.

Secondary 1 & 2 Grade Boundaries							
Subject	Passing Grade	A+	A	B	C	D	E
English Language and Literature	C	75-100	70-74	60-69	50-59	40-49	<40
First Language Chinese	C	75-100	70-74	60-69	50-59	40-49	<40
Chinese as a Second Language	C	75-100	70-74	60-69	50-59	40-49	<40
Chinese Language	C	75-100	70-74	60-69	50-59	40-49	<40
Mathematics	C	75-100	70-74	60-69	50-59	40-49	<40
Science	C	75-100	70-74	60-69	50-59	40-49	<40
Geography	C	75-100	70-74	60-69	50-59	40-49	<40
History	C	75-100	70-74	60-69	50-59	40-49	<40
ICT	C	75-100	70-74	60-69	50-59	40-49	<40
Music	C	75-100	70-74	60-69	50-59	40-49	<40
PE	C	80-100	70-79	60-69	50-59	40-49	<40
Art	C	75-100	70-74	60-69	50-59	40-49	<40

ASSESSMENT CALENDAR

The assessment calendar is a point of reference for all students and parents. The calendar is a working document and is updated regularly therefore it is important students check the assessment calendar on a daily basis. Teachers are required to include a test or an assessment related to an end of semester report, at least 2 weeks in advance.

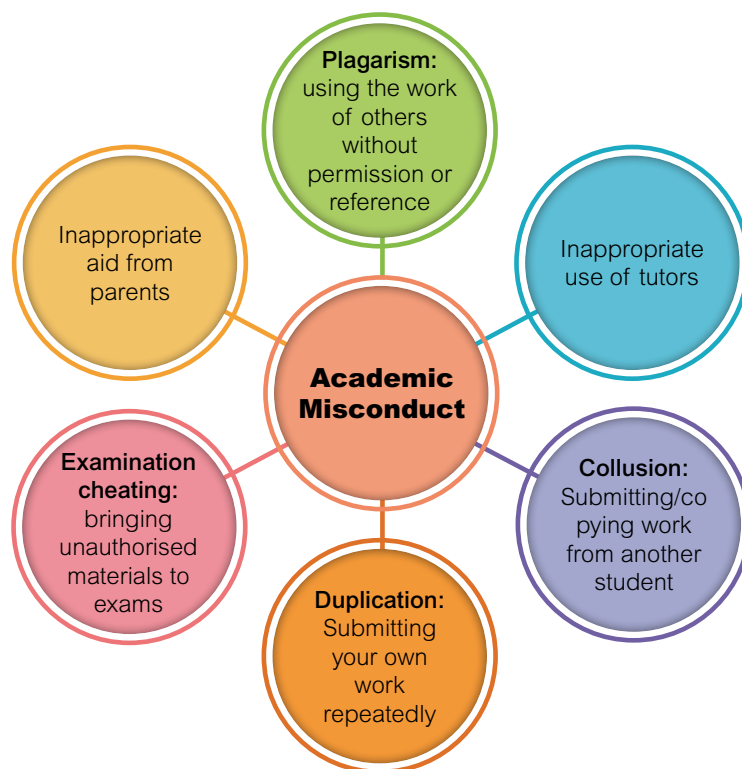


PARENT TEACHER CONFERENCES (PTC's).

PTC's for students in S1 and S2 take place in February whilst appointment week takes place in late June following the end of year exams. Prior to PTC's a circular will be sent to all parents with booking information. Please note booking is on a first come, first served basis and each appointment is a maximum of 10 minutes in duration.

ACADEMIC MISCONDUCT

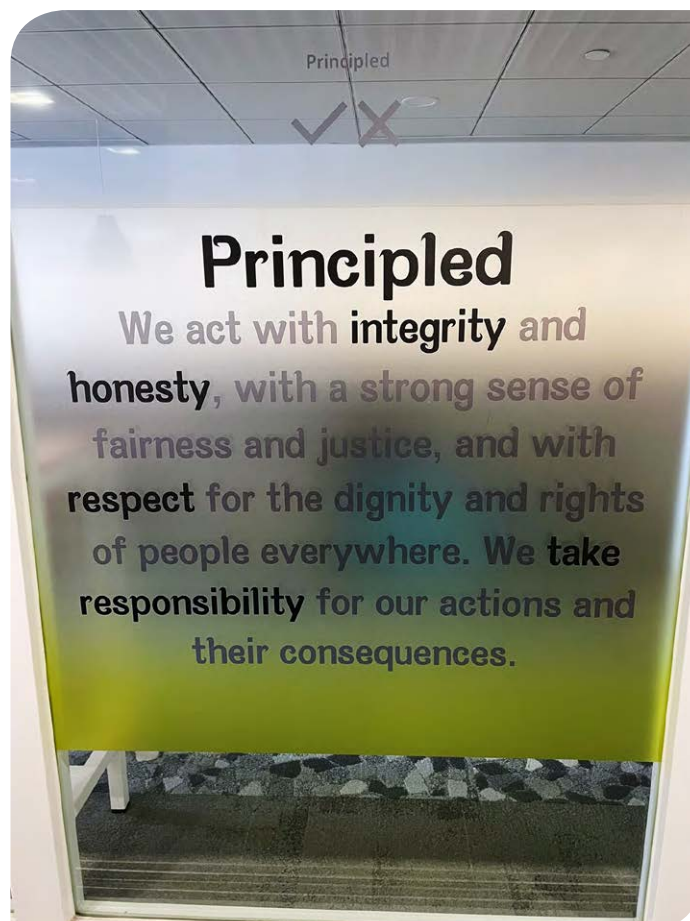
The value of Integrity and Responsibility are important when students complete their work. This means that students will not resort to cheating, and will always acknowledge work or ideas that are not their own. Students will respect intellectual rights and acknowledge others' ideas and work in a proper manner. Academic dishonesty can take several forms and the following list shows the more common forms of academic misconduct.



CONSEQUENCES OF ACADEMIC MISCONDUCT

Homework or School-based internal assignments

Offense	Consequences	Additional Notes
1st offence (homework)	Zero mark, email to parents (by subject teacher)	
2nd offence (homework)	Zero mark, email to parents (by HOD)	
3rd offence	Zero mark, one-day suspension, 1st warning letter	Family Group Conference with Head of Department (for the subject) and Year Head
4th offence	Zero mark, one-week suspension, 2nd warning letter	Family Group Conference with Head of Department (for the subject), Year Head and Head of Department / Student Life University Counselling guidelines in warning letter (disclosure agreement)
5th offence	Zero mark, meeting with Vice-Principal	Family Group Conference with Vice-Principal



USE OF PERSONAL DEVICES

All students are given access to Wi-Fi and are allowed to use their MacBooks in school. This is to facilitate access to resources, improve communications and encourage innovation. The School regards this access as a privilege, not a right. Students are expected to act in a responsible, ethical manner, and to abide by Hong Kong Law. Permission to bring digital devices to school and to use the school accounts are granted only when an agreement to this policy has been acknowledged.

Students will....	Students will not...
<ul style="list-style-type: none"> • only bring the brand of laptop as stipulated by the school. • make an effort to keep their computer free from viruses and other destructive materials. If their computer is accidentally infected, they will seek help from a professional or a member of the ICT Department. • properly cite any Internet resources that are used in their work. • mute all sound on the laptop at all times unless permission is obtained from the teacher for instructional purposes. 	<p>Use any of the following between 8am and until after their final lesson (Unless permission granted by a teacher):</p> <ul style="list-style-type: none"> • Laptops • Handheld gaming devices • Music players • Earphones and/or airpods <p>Use any of the following:</p> <ul style="list-style-type: none"> • use any digital device and school account, such as email or Google classroom for non-educational activities • Take photos or videos of anyone on school premises without permission • Share images or videos of anyone associated with the school without permission • Access, download, store or print pornographic material • Stream any form of material without permission • Use software for hacking eavesdropping or network administration • Use VPN's • Use, alter or delete data without appropriate authorisation • Transmit damaging agents • Attempt to access shared drives within the SISHK network that he/she is not permitted • Publish any defamatory, scandalous, illegal, harassing, threatening or intimidating material

For S1 and S2 students, if a phone is seen or heard by a teacher outside of permitted times, it will be confiscated. A teacher has the final judgement to ascertain whether or not a digital device is being used for educational purposes. A teacher may ask to view any device at any time to ensure that the rules are being obeyed. If a student is found in violation of any of these rules, they will have their digital device confiscated by the teacher and dealt with in accordance with the Discipline Policy.

PART 3: STUDENT LIFE

3.1: PASTORAL CARE



Welcome to Singapore International School (Hong Kong), I am Ms Lisa Curley, the Head of Student Life. This is my fourth year here at SISHK within the PE Department. Prior to Joining SISHK I worked in UK and Kenya as a Head of Faculty.

As part of the pastoral care programme we aim to support you throughout your time here at SISHK, allowing for holistic development and supporting your academic and personal growth, health and well-being. We aim to provide you with an abundance of opportunities which will shape your life and school experience from; leadership opportunities in the arts, athletics, culture and school organisation, to cross-curricular activities (CCA's) across a range of domains including sports, humanities, language, STEM and life skills. Each year you will embark on a journey of self-discovery in line with the school values (3RICH) via experiences such as year level camps where you will experience the great outdoors and everything Hong Kong has to offer.

Should you need to contact me you can email curleylisa@singapore.edu.hk



I am Ms Ngan or 颜老师 as what the students will address me in school. I have been at the School 11 years with Chinese Language as my main teaching subject. Other than Chinese lessons, I am involved in student development work, focussing on lower secondary students as a Year Head in the last four years. My current role as a Year Head (Student Integration) allows me to assist newly admitted students to adjust well into the school life. I will be working with the form teachers and other colleagues to support our new students to settle into school life quickly. This includes their academic learning environment as well as their co-curricular areas where they will further develop themselves as well as making new friends in the school.

大家好，我是新加坡国际学校（香港）的颜老师，除任教华文外，我也担任初中的年级组长，主要培育学生的全人发展。而从今年开始，我主要帮助新生适应新的校园生活，通过与班主任及科任老师的合作，令新生尽快融入我们的大家庭，包括学习、交友及自我身心各方面的发展，在新学校找到归属感。

Should you need to contact me you can email leengan@singapore.edu.hk

SECONDARY 1 PASTORAL CARE TEAM



I am a Geography teacher with a decade of enriching experiences working with energetic youth. I enjoy sharing about my favourite subject, Geography (no surprise there), and getting involved in various student development programmes. The most enjoyable part about being a teacher has been watching students learn and grow from the various experiences they undergo.

Secondary 1 students can look forward to events such as cohort camps and family festivals, as well as to learning more about new subjects, working closely with mentors (seniors from Secondary 3) and many other new experiences. My advice to our youngest members of the SISHK Secondary section would be to keep an open mind and be receptive to feedback; there's lots of learning and growing that awaits you this year.

Should you need to contact me you can email kaurjasvir@singapore.edu.hk

Form Class	Teacher Name	House	Email
S1-1	Ms Irene Lee	Marshall	leeirene@singapore.edu.hk
	Ms Serene Yee	Zubir Said	yeeserene@singapore.edu.hk
S1-2	Ms Shaney Chan	Lee Kuan Yew	chanshaney@singapore.edu.hk
	Ms Rebecca Youde	Raffles	youderebecca@singapore.edu.hk
S1-3	Ms Kemmy Lim	Raffles	limkemmy@singapore.edu.hk
	Ms Qin Fan	Marshall	qinfan@singapore.edu.hk
S1-4	Ms Phoebe Lam	Lee Kuan Yew	lamfungyim@singapore.edu.hk
	Mr Martin Brown	Raffles	brownmartin@singapore.edu.hk
S1-5	Mr Paul Satish	Marshall	paulsatish@singapore.edu.hk
	Mr Samson Chen	Zubir Said	chensamson@singapore.edu.hk

SECONDARY 2 PASTORAL CARE TEAM



Welcome to S2. I am Ms Rice, the year head. Over the past twenty years, I've taught in schools in the UK, China and Hong Kong, and this is my sixth year at SISHK. Secondary 2 have an abundance of knowledge, energy and creativity, in a plethora of areas, as well as a lot of heart. They enjoy learning, both inside and outside of classrooms and they actively participate in Physical Education and CCAs, such as football, volleyball, badminton and basketball. Many students also enjoy the multiple Student Leadership opportunities available, such as the Student Council, the Audio-Visual Committee, Muze and the House System.

Should you need to contact me you can email riceamy@singapore.edu.hk

Form Class	Teacher Name	House	Email
S2-1	Ms Natasha Claypole	Zubir Said	claypolenatasha@singapore.edu.hk
	Mr Jonathan Lai	Lee Kuan Yew	laijonathan@singapore.edu.hk
S2-2	Mr Brent Kotze	Zubir Said	kotzebrent@singapore.edu.hk
	Ms Huang Yinping	Lee Kuan Yew	yinpinghuang@singapore.edu.hk
S2-3	Ms Connie Lau	Raffles	lauconnie@singapore.edu.hk
	Ms Irene Park	Marshall	parkirene@singapore.edu.hk
S2-4	Mrs Karen Yeong	Lee Kuan Yew	yeongkaren@singapore.edu.hk
	Ms Gloria Chong	Raffles	chonggloria@singapore.edu.hk
S2-5	Ms Shu Sze Tan	Marshall	tanshusze@singapore.edu.hk
	Ms Liu Yuxue	Raffles	liuyuxue@singapore.edu.hk

FORM TUTOR INTERACTION TIME (FTI)

For students and parents alike, the Form Tutor (FT) is the first point of contact. Each class (e.g S1-1) will have at least 2 Form Tutors who are available to support students within the academic, social or emotional domains.

The Form tutor will:

- Oversee all administrative duties related to the form class
- Check and monitor students attendance and punctuality
- Monitor students academic progress
- Deliver the Schools CGCE Program twice a week
- Support students socio-emotional well-being



HOMEROOMS

FTI takes place every morning from 8am to 8.30am and is delivered by the Form Tutors within their homerooms. Homerooms are a place where students can feel at home, safe and supported by their teachers and their peers. Students have an opportunity to socialise, organise their day, reflect on their schooling experiences and prepare for any upcoming activities they may be a part of. As part of the FTI programme students are required to attend whole school assemblies once a week, house meetings once a week and Year Level assemblies once a term.

Students, under the domains care and harmony work together to ensure their homerooms are clean, tidy and organised throughout the academic year.

Secondary 1 Homerooms

S1-1	S1-2	S1-3	S1-4	S1-5
401	402	403	404	405

Secondary 2 Homerooms

S2-1	S2-2	S2-3	S2-4	S2-5
501	502	503	504	505

ASSEMBLIES

Morning assemblies for S1 and S2 students will take place every week on a Friday from 8am to 8.25am in the Auditorium. Afternoon assemblies take place every Wednesday afternoon from 2.20-3pm in the Auditorium.

STUDENT DIARIES AND LOCKERS

Each student will be provided with a student diary at the start of the academic year. Benefits of using a student diary include:

- Improved organisation of homework
- More likely to meet deadlines
- Helps to manage your time, especially when you are juggling academics with extra-curriculars
- You have the key dates and policies (e.g. homework policy) at your fingertips as a reminder.

STUDENT LIFE E-CALENDAR

The Student Life calendar keeps students up to date with all events taking place across the academic year at SISHK. The e-calendar is a working document and so will be regularly updated.

[Student Life E-calendar](#)



INCLEMENT WEATHER GUIDELINES

Information related to tropical cyclone warnings and rainstorm warnings will be posted on the school's website following EDB announcements.

[Inclement Weather Guidelines](#)



STUDENT BEHAVIOUR POLICY

Discipline in SISHK rests on a foundation of our school 3RICH values. The goal is to enable our students to learn how to get along with others, to solve problems, and to make responsible choices.

Effective discipline requires collaboration among stakeholders. This is best achieved in the school community where:

- Every teacher and student respects one another and the school environment
- Every teacher and student is responsible for the discipline of the school
- Every student is clear about what is asked of him/her, why it is required and the consequence and learning opportunities related to irresponsible actions and behaviour.

ACTIONS, BEHAVIOUR AND LEARNING OPPORTUNITIES

Action and/or Behaviour		Learning Opportunity
Offences that affect Self <ul style="list-style-type: none"> • Lateness to school • Incomplete assignments • Not being prepared for class • Not complying to dress code • Low level disruptive behaviour • Lack of respect to a teacher • Lack of responsibility • Inappropriate use of digital devices during school hours (Consequence: immediate confiscation of device until 3pm)	1	Verbal Discussion
	2	Verbal Discussion
	3	Verbal Discussion
	4	Call, followed by email to parents (or conference, where necessary)
	5	Call, followed by email to parents mentorship from Peer Support Programme (Secondary)
	6	Call, followed by email to parents to arrange a Family Group Conference and includes student Thinking and Planning time
Offences that affect Others <ul style="list-style-type: none"> • Use of vulgar language/ gestures • Unacceptable behaviour to peers (in person or on social media) - name calling, general meanness • Rudeness, defiance or disrespect to teachers or other staff members • Academic dishonesty with homework tasks, including collusion 	1	Call, followed by email to parents and mentorship from Peer Support Programme
	2	Call, followed by email to parents to arrange a Family Group Conference and student Thinking and Planning time/Community Service
	3	Call, followed by email to parents to arrange a Family Group Conference, student Thinking and Planning time/Community Service and referral to Student Well-being team
Serious Offences¹ <ul style="list-style-type: none"> • Truancy • Carrying to school and/or use of a weapon or weapon like object which has potential to harm • Fighting • Assault • Consistent/persistent bullying • Theft (from students, school staff or teachers) • Substance abuse • Vandalism • Forgery • Academic dishonesty² 	1	Call, followed by email to arrange a Family Group Conference, student Thinking and Planning time/Community service, and warning letter issued during face-to-face conference
	2	Call, followed by email to arrange a Family Group Conference, referral to Student Well-being team warning letter issued during face-to-face conference and in-house isolation
	3	Call, followed by email to arrange a Family Group Conference, referral to Student Well-being team, warning letter issued during face-to-face conference and out of school suspension

Note:

¹ In cases of serious misconduct, the School Leaders have the discretion to suspend or expel a student from school, or refer the matter to the Police.

² For malpractice involving IGCSE/IBDP assignments or examinations, penalties will be meted out according to the Academic Honesty Policy, which is in line with the requirements of the respective examination boards.

SCHOOL BUS CODE OF CONDUCT

Students have a right to feel safe at school and on the school bus. We value the safety of our children and expect our students to follow our school rules at all times. This code of conduct will spell out the values, rules and consequences which every student needs to know and abide by to keep our school buses safe and comfortable for the school community.

Our students should:

1. Show respect to the bus drivers and bus mothers at all times and follow their instructions promptly.
2. Be responsible by keeping their hands and feet to themselves and always remain seated in their assigned seats and buckle their seat belt at all times unless, otherwise directed by the bus driver and bus mothers.
3. Practise quiet conversation with the student(s) seated near you, using Voice level 1 or Voice level 0.
4. Take care of their own belongings.
5. Finish eating/drinking before getting on the bus. Consumption of food and drinks is not allowed on the school bus.
6. Show care and respect to all at all times. Use appropriate language and actions at all times.
7. Be on time and wait at the bus stop in a proper manner showing care and respect to others.
8. Board and exit the school bus only at designated areas/bus stop.
9. Refraining from using laptops and know that toys and games are not permitted on the bus.
10. Be responsible in the use of mobile technology such as not playing music loudly (headphones use only) and taking photos of others without permission.
11. Students will need to understand that there are consequences if they have made wrong choices or violate the rules agreed upon. The discipline plan serves a guide to help our students improve their behaviour. The ultimate aim is to transform them to be more self-disciplined and make better choices on the bus.



Contact us



DISCIPLINE: SCHOOL BUS

Offence	Description	Learning Opportunity
1	The Bus Mother will talk to the child and tell them what they need to do. If the offence is repeated during the same trip, Form Tutor(s) will be informed of the incident.	Verbal Discussion
2	The Form Tutor will talk to the student, allowing a verbal reflection to take place. The Form Tutor will contact the Parent to explain the unsafe or inappropriate behaviour on the School Bus. (A gentle reminder)	Verbal Discussion Observation
3	Year Head submits Suspension Form to the HOD Student Life with a recommendation for a bus suspension for a specific amount of day(s) depending on the severity of the offence	School bus suspension Probation Seated at the front of the bus (1 week)

For serious violations and offences, such as fighting; vandalism; excessive use of inappropriate language or gestures; or actions that will compromise the safety of others, immediate bus/ school suspension with parental notification will be given. Parents may be liable for any damage caused to a bus by their child(ren).

ANTI-BULLYING POLICY

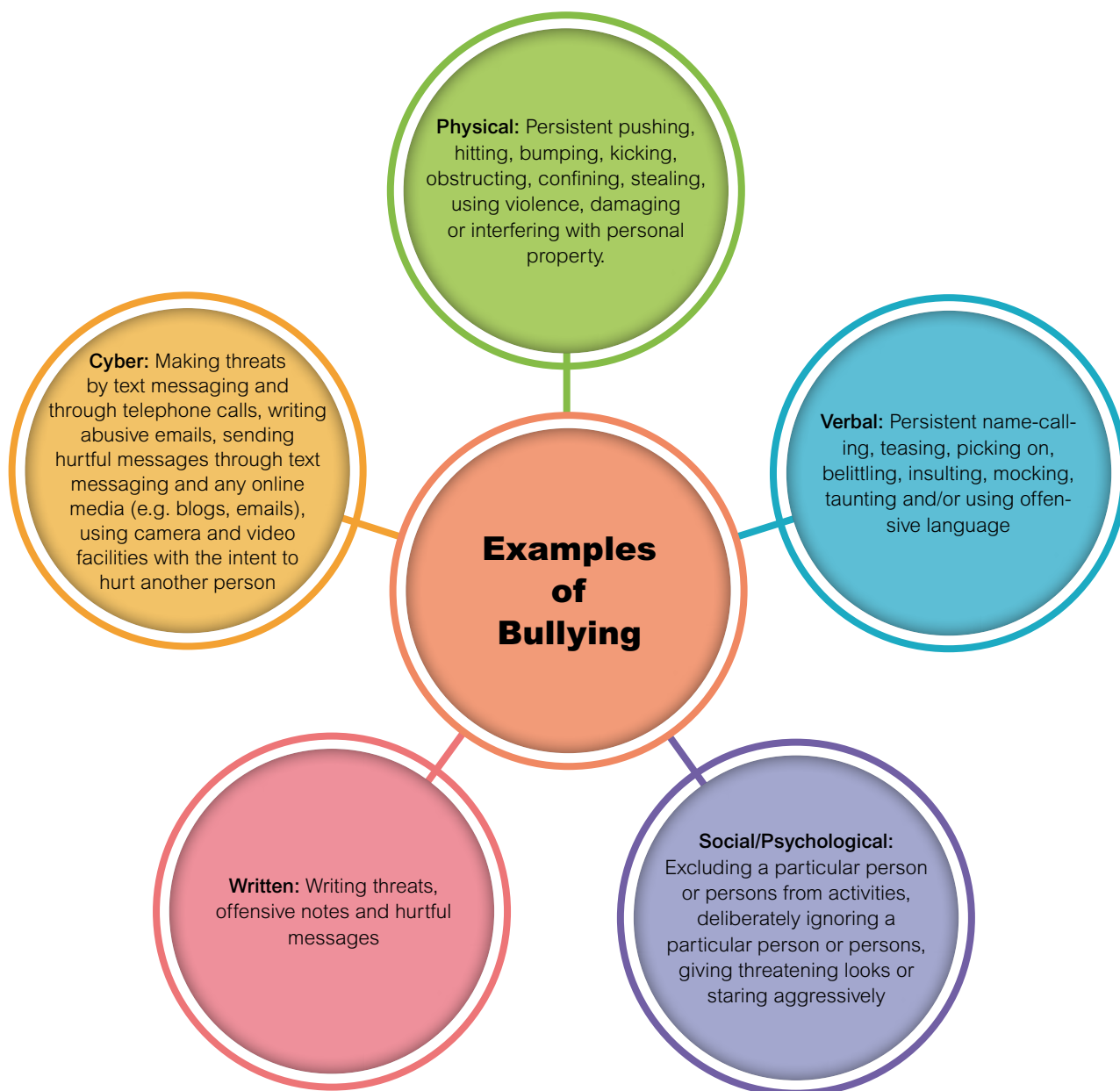
Bullying, in any form, is unacceptable in school. The school affirms the worth and dignity of every student and member of staff. Bullying undermines these values and can negatively inhibit a student's development and his/her quest for excellence. It is the responsibility of everyone in the school community to prevent any form of bullying.

Bullying is not tolerated as all students and members of staff are free from the fear of bullying, harassment and intimidation.

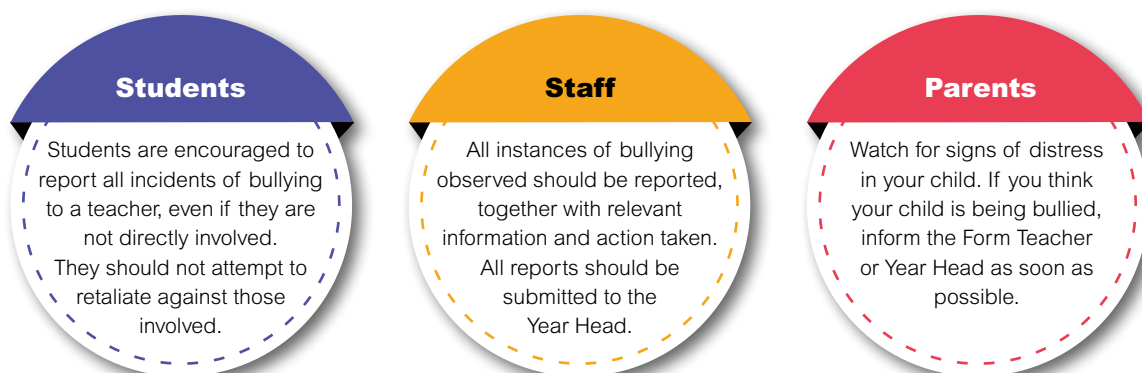
Bullying can:

- devalue, isolate and frighten an individual/group
- affect a student's ability to achieve his/her best
- have a long-term negative effect on those engaging in bullying behaviour, those who are the subjects of bullying behaviour, and bystanders

Bullying is any behaviour intended to hurt, injure, threaten or frighten another person. Bullying behaviour is usually persistent and repetitive.



PROCEDURES FOR REPORTING BULLYING INCIDENTS AT SISHK



UNIFORM POLICY

Students are expected to maintain a neat appearance at all times and wear the school uniform with pride (for S1 to S4 students).

Jewellery	1 pair of small ear studs
Makeup	Not allowed
Hair	Must be natural colour No artificial colours allowed (e.g. red, gree, purple, blue) Girls and boys hair must be tied back for Science Practicals, PE and outdoor educational camps. (if below the shoulder) Boys hair must be neat and presentable at all times.
House T-shirts	Only to be worn on House days (with school uniform shorts or trousers)
House Jackets/Hoodies	May be worn Monday to Friday
Leadership Committee Jackets/Hoodies	May be worn Monday to Friday
Leadership Committee T-Shirts	Only on certain leadership days when the group is hosting an event.
Winter Coats, Caps and Scarves	Only to be worn when the temperature drops below 12 degrees celsius. Must be school colours (Navy blue/Grey)
Note: Should a student (Sec 1- DP2) come to school without appropriate school attire, a loan item will be provided for the day. See the school diary for more information.	

Note: Any jewellery of religious significance is permitted but must be accompanied by a confirmation email from a student's parent or guardian.

During a Casual Dress Day students are expected to follow the 4B rule. Some examples of inappropriate dress style include

- Flip-flops and slippers
- Spaghetti strapped tops, distressed jeans
- Skirts, skorts, shorts and dresses that are shorter than 3 inches above the knee.

“4B rule: No Belly, Breasts, Back or Bottom on display”.



CGCE CURRICULUM



I am an English teacher by training and apart from sharing the joy of English literature with students, I love being a part of their holistic development and getting involved in the various programmes and curricula that could help guide students' growth in these areas. I strongly believe that education should be holistic and is not just about numeracy and literacy, but also about character, values and life skills.

If you would like to contact me please email brampynattaporn@singapore.edu.hk

SISHK's Character and Global Citizenship Education (CGCE) is a key co-curricular component that seeks to complement our academic curriculum where students are guided and nurtured into global citizens who are caring, open-minded, reflective and principled leaders who can confidently navigate the VUCA (Volatile, Uncertain, Complex and Ambiguous) world of today.

The curriculum is integrated across various school experiences such as pastoral care (PC) lessons, student development programmes (e.g. leadership, camps etc), co-curricular activities (CCAs), school-wide events (e.g. assemblies, learning journeys etc), form teacher interaction and academic subjects. Interfacing with other student development programmes, the curriculum seeks to engage students in both the cognitive and affective domains through pastoral care lessons and experiential learning. This allows for a more effective acquisition of social-emotional competencies, life skills and sound moral values.

Our pastoral care lessons serve to provide students with cognitive understanding of various socio-emotional competencies, develop their moral reasoning and reflective thought process, engaging students in the moral, emotional, intellectual and social domains of learning. At SISHK, pastoral care lessons are focused on the following domains across the 6 years in secondary and IBDP programme.

SISHK Values	3 Key Concepts	PC Areas
Respect	Identity (Self Awareness & Self Management) Relationships (Social Awareness & Relationship Management) Choices	Values/Character Building
Responsibility		Socio-emotional Competencies
Resilience		Sexuality Education
Integrity		Cyber Wellness Education
Care		Education and Career Guidance (ECG)/ University Counselling (UC)
Harmony		Global Citizenship Education
Mental Health		
Additional Modules: Leadership Modules, Financial Literacy and other life skills etc		

UNIVERSITY COUNSELLING TEAM

The university counselling team is available to support students in the decision making process when considering their iGCSE subject selection choices. Should you wish to discuss your selection choices with the UC team, feel free to contact Helen Cheung, University Counsellor via email cheunghelen@singapore.edu.hk

HOLISTIC REPORT CARD

The HRC records a student's involvement, contributions and achievements beyond academic achievement. The report includes:

- Co-Curricular learning
- Awards
- External Programmes & Competitions
- School Events & Programmes
- Community Service

Students will receive the report at the end of the academic year alongside their End of Year report card.



REFERENCE REQUESTS

Students who wish to receive a reference request from the school can do so by emailing secondary@singapore.edu.hk

SCHOOL BUS

A two-way school bus service for students is operated by Kwoon Chung Motors Co. Ltd. Registration can be made online at <https://school.kcm.com.hk/sis/>. Fees are to be paid directly to "Kwoon Chung Motors Co. Ltd."

Address: 3/F, 8 Chong Fu Road, Chai Wan, Hong Kong

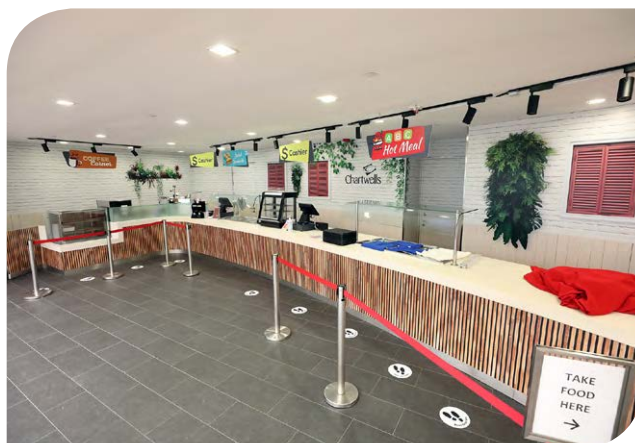
Tel: (852) 3193 9339 Email: sis@kcm.com.hk

LUNCH AND SNACK

The school has appointed Chartwells to provide balanced meals for students during school days. Snack coupons are available to purchase from the Canteen. Students are strongly advised to purchase their lunch ticket from the touch-screen kiosks during recess to reduce queuing time for food at lunch time. Octopus Card is encouraged for payment (Cash and Octopus top-up service are also available).

Tel: (852) 9551 8894

Email: SGPHK@compass-hk.com



BOOKSHOP

The school has appointed Singapore Asia Publishers (HK) Limited to operate the school bookshop. It is open Mondays through Fridays, from 9.00 am to 5.00 pm on school days, and from 9.00 am to 4.30 pm on school holidays. Please make an appointment before the visit.

Tel: (852) 2553 9188 Whatsapp: (852) 5315 1311

Fax: (852) 2553 0099 Email: saphk@biznetvigator.com

SCHOOL LIBRARY

Students have access to the school library during recess, lunch and designated times within the curriculum.

SCHOOL LIBRARY



SCHOOL LIFTS

Students are allowed to use the lifts in the morning before 8am, at recess, lunch and after 3pm or their last lesson of the day. Students should ensure that they adhere to the maximum capacity. Students who have an injury can request a lift pass from their Year Head.

CARD GAMES

Card games are fun, allow for socialisation and can be an instrument for learning, therefore are permitted for use within school. However, students should be aware that gambling is not permitted in any form. A teacher will confiscate the cards of any student(s) who are found to be playing or using cards inappropriately and additional consequences may be enforced.

3.2: LEADERSHIP



The student leadership elections and recruitment start in September of each year. Students can submit their application through a google form, after which elections and interviews will be conducted. All the confirmed student leaders will then be officially invested in November in a whole-school ceremony. The Student Leaders' Investiture is also a special occasion to thank, commemorate and show our gratitude to the success, contributions and impact of the departing Presidents and Heads of Houses.

Should a student wish to contact me to discuss leadership opportunities at SISHk further please email directly; cheungdavid@singapore.edu.hk

ATHLETIC COUNCIL



The Athletic Council provides sporting opportunities for all students through fun and engaging events, to promote team spirit, collective unity, and a healthy lifestyle within the student body. We believe in a student's physical and mental well-being above all else. Our annual whole-school events like our christmas event help students destress and encourage participation, while our smaller events like grade games allow students to participate in team sports; in recent times, we've been involved in charity work, partnering with local sports charities who give sporting opportunities to the underprivileged youths, to give back to the wider Hong Kong community.



COMMUNITY COUNCIL



The Community Council believes in promoting social responsibility to create a sustainable future for all. We have provided service opportunities for the school such as K4K teaching services, beach cleanup days, Caritas foundation and Crossroads foundation volunteering opportunities and many more. We also host annual school-wide events to promote sustainability and raise funds for charity, namely our staple Vertical Marathon where students run laps around the school to raise money for charity. This year, we are also hosting Teacher's Appreciation Day and we are constantly looking for more opportunities to bring to SISHK!



STUDENT COUNCIL



The Student Council aims to represent the voice of the student body - our motto is "For Students, By Students." With a team of passionate student leaders, we aim to cultivate a vibrant and engaged student body through our various events and initiatives, building an interconnected and harmonious school community. SIS students cherish memories made with their friends through our annual events "Spirit Week" and "Winter Ball", where we promote school spirit through dress-up days with physical activities, and wish for students to de-stress and enjoy themselves. During HBL, we took to social media and FTI to keep students engaged. We wish for all students to be heard, working on Suggestions Schemes each year to improve their SISHK experience.



AUDIO-VISUAL COMMITTEE



The AV Committee supports and enhances the school community by working behind the scenes to ensure that all school events (e.g. assemblies, award ceremonies, graduations, special events) run smoothly, and also produces entertaining bi-weekly broadcasts that range from event recaps to game shows. Through this, our members are equipped with the know-how and experience of utilising industry-grade machinery and software, an increasingly vital skill set in our technologically advancing world. From AY2122 onwards, we have been organising the Inter-House Editing Competition, which provides students with a platform to showcase their editing, filming, and storyboarding talents.



MUZE



The Muzé Committee provides a platform for students at SISHK to express and develop their talents in the performing arts, with various events enabling our community to show off their skills in music, dance, and theatre. Our team of dedicated and passionate students works hard to produce creative events that the whole school can look forward to, especially our annual flagship event: the musical. We foster a kind and caring family of members, where everyone's voice is valued. We hope to continue the development of performing arts culture in SISHK for many years to come!



CHINESE CULTURAL CONNECTION

Chinese Culture Connection (“CCC”) was initiated as a collection of CCAs back in 2016 and launched as an official committee later. CCC strives to promote and spread awareness of Chinese culture throughout the student body in a bid to enhance the student body’s understanding and appreciation of Chinese culture. By hosting a variety of interesting and exciting events, such as the all-time-famous “I am A Singer” competition, Chinese Culture Week, and “The Sound” dubbing competition, CCC reached out to students in the most engaging ways. With many more events to come, CCC will continue to provide a flourishing Chinese culture environment and will vitalise the SIS community in terms of learning and spreading Chinese language and traditional culture.



STUDENT-INITIATED GROUPS

ARMCHAIR SPECIALISTS

The Armchair Specialists were founded with the aim to promote interests in current events. Through releasing newsletters and making videos, we hope to keep the school updated and aware about global issues. The team comprises of illustrators, writers and editors who work on projects entered around topics they want to bring attention to. Overall, our objective is to foster creativity alongside global awareness. As we move forward, we seek to expand our coverage on political, social and economic affairs in an informative and impartial manner.



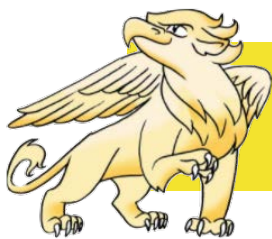
The Armchair Specialists

GREEN CLUB

Green Club aims to promote eco-friendliness within our SISHK community. As a newly founded club, we hope to cultivate an environmentally responsible mindset within students that eventually becomes a habit. We are composed of logistics, education and farming departments, where we aim to develop skills like innovation, planning, leadership and organisation in our members. We have hosted a variety of events like Green Week, the Indoor plant adoption, Organic farming etc. and we aim to spread awareness within the student body through these methods. All in all, we hope to see more people engaged in supporting the green efforts around the world.

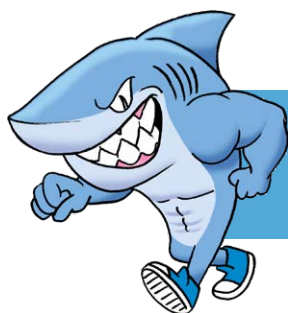


SISHK HOUSE SYSTEM



LEE KUAN YEW HOUSE (LKY)

LKY House aims to encourage a never give up attitude, to persevere even when things don't go our way. Our internal team makes great connections with their classmates which in turn allows for effective encouragement towards LKY members; inspiring them to do their best when they participate in events. Though LKY may not come up on top every time, being able to come out of an event saying we put in 100% effort is enough satisfaction. Though winning the house cup may be seen as the most important thing, we ultimately care more about developing compassion and perseverance amongst our students.



MARSHALL HOUSE

Marshall House aims to cultivate a strong familial connection with every one of its members, due to the unwavering belief that the foundation for creating great memories is being surrounded by people that we truly care about. This foundation is built by our amazing House Representatives and Heads of House, whose leadership and dedication to service is what creates such a harmonious atmosphere, giving all Marshall members an identity they can take pride in. This pride is what ultimately dictates the success of the House in our everlasting chase for the House Cup.





RAFFLES HOUSE

Raffles House aims to inspire compassion and excitement through participation in various house events, and to create a sense of community amongst our 100+ members. Our dedicated team of House Representatives and Heads of Houses do our best to ensure that we put in as much effort as possible into each event, and confidently say we've achieved our goals to the best of our abilities. We challenge ourselves and each other, and while we aim to win events and the House Cup, our primary goal is to foster a kind, caring, and passionate community, with care for one another.



ZUBIR SAID HOUSE

Zubir Said aims to promote harmony and togetherness within our house. We excel in working with each grade and supporting each other at all times. Our goal is to win the house cup whilst encouraging all to be proud of our Zubir Said House. During each event, our house representatives put in great effort to lead our enthusiastic classmates, wishing that everyone will enjoy and have a great time. Through lots of background work and planning, as well as the eager participation of members of the Zubir Said house, we strive towards the common goal of not only winning the house cup but also fostering the Said House spirit!



SISHK EDUCATIONAL ENRICHMENT WEEKS

STEAM WEEK



The Science, Maths, ICT and Art departments jointly organise the STEAM week every year in the month of November. The aim of the event is to promote and involve the whole school community in STEAM activities. Previous STEAM week themes have included Space, STEM vs Pandemic and Transport in 2021, 2020 and 2019 respectively. Throughout the week, the teachers and STEAM ambassadors (students) organise various activities including; STEM booth, expert sharing, posters quizzes, kahoot quizzes, photography exhibitions and other exciting activities.



SPIRIT WEEK



Spirit week aims to raise school spirit and promote a vibrant school community. Students will have the opportunity to participate in events such as Mismatch Monday, Twin Tuesday, House T-shirt Wednesday, Trendy Thursday and Fandom Friday, as well as engage in a wide range of activities and quizzes.



SPORT AND PE WEEK



Students will have the opportunity to further enhance their love for sport, physical activity, and fitness through familiar games, challenges, and sporting activities carried out by the Athletic Council and PE Department. Students will also have opportunities to give back to their SISHK and HK community through charities and fundraising events introduced and carried out throughout the week.

HUMANITIES WEEK



The Humanities Departments presents Humanities Week annually with the following objectives (**D.E.A.R**):

- **D**evelop concerned global citizens **E**xpand humanistic knowledge
- **A**dvocate personal conviction
- **R**eflect and **R**eframe one's perspectives



Every year, a different theme would be adopted to raise awareness on global issues. Past themes have included:

AY2122: "From Red to Green" with a focus on creating a sustainable world;

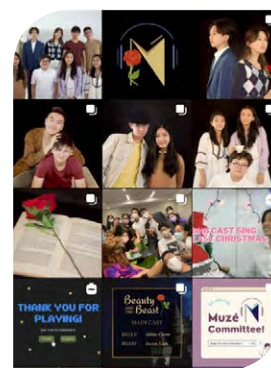
AY2021: "Building Global Resilience" with focus on thriving in a volatile and uncertain world;

AY2019: "What Are We" with a focus on understanding one's identity in relation to the world.

PERFORMING ARTS WEEK



The annual Performing Arts Week (PA Week) helps to achieve the Muzé Committee's mission of developing a dynamic performing arts culture in the school community through different activities during the week. Various events have been organised for all levels of Secondary and DP students, such as Music Video competitions, Inter-House Kahoot, and Family Feud. There is a range of performances held throughout the PA week, from educational Mutalks to the core event, the musical. The variety of activities can engage our school community's wide range of performing arts talents and interests.



READING WEEK



The English Department creates a range of dynamic activities for Reading Weekeach academic year, developed around a core theme. Students enjoy opportunities to showcase their passion for reading and writing. House Points are available for some of the activities, which promotes healthy competition amongst the students. Reading Week is always a much-anticipated feature of the Activity Calendar!



FAMILY FESTIVAL



Family Festival is an opportunity for the community to come together and celebrate all that SISHK has to offer. S1 and S2 students create games and arts and crafts activities which they then deliver to younger Primary school students. With the theme being 'Christmas' students are encouraged to dress up in festive attire and bring joy to all those around them. Preparations for Family Festival begin in early November.



LOWER SECONDARY OUTDOOR EDUCATION CAMPS

Lower secondary camps take place annually in October. Students will be invited to attend the camps which are either overnight or day camps and provide an opportunity for students to bond with their peers and teachers alike.



SECONDARY 1 VIDEO



SECONDARY 2 VIDEO

Aims of SISHK Camps (S1-S4)

ACE

- **A**cquire leadership and life skills for personal and future growth,
- **C**onnect with their peers in physical and social interactions
- **E**ngage in outdoor and physical activities to foster the joy of learning and strengthen their character.



Tier 1 Leadership Development Programme



SISHK Camps form the foundation of our Tier 1 Student Leadership Training Programme. The camp focuses on outdoor experiential learning through adventure in S1 and S2.

Adventure and immersion into the natural environment are mediums for students to:

- Relax and unwind from the academic rigour and stress
- Re-connect socially with their peers in a different setting more confident and effective leaders
- Develop and sharpen skills in reflection, problem-solving and critical thinking
- Gain greater awareness of and care for self, others, as well as the natural environment
- Become stronger communicators and more cooperative team members
- Develop outdoor skills and competencies

These camps are platforms for cultivation of values and social-emotional competencies, life skills and positive attitudes that we want our students to deepen so that students can effectively enact personal responsibility and self management skills.



SCHOOL EVENTS AND CELEBRATIONS

SISHK Swim Meet

Students have an opportunity to compete in a range of swimming events for their house, including 50m/100m, free, back and breaststroke plus the famous 'Raft Relay'.



Diwali

Diwali is an opportunity for students to embrace Indian culture through food, history and symbols which many of SISHK's community celebrate.



Christmas Celebrations & Interhouse Dance

Student representatives work collaboratively with their respective house to create a dance involving all members.



2021

OCT

OCT

OCT

DEC

DEC



Mid-Autumn Festival

The Mid-Autumn Festival is a charity event, hosted by Primary School in collaboration with the Secondary Chinese Department and CAS committee, to fundraise for our community service partner through celebrating Mid Autumn in SISHK as a family



Winter Ball

The Winter Ball event aims to provide students with a fun and comfortable evening of activities. By engaging students through student performances and games, this event celebrates Winter* usually before the December break. The evening of relaxation also promotes harmonious interaction and increases the spirit of happiness within the school community as students gather and enjoy company, creating long-lasting memories.

Chinese New Year Celebrations

Chinese New Year celebrations are an opportunity for students to celebrate the upcoming CNY with their peers and teachers. Students are engaged in a wide range of cultural activities.



JAN

Sports Day

Students have an opportunity to participate in track and field events for their house such as shot put, javelin, discus, 100m, 200m, long jump and the relays.



JUN

End of Year celebrations

At the end of the academic year students have the opportunity to relax and unwind through games and activities organised by various committees and show appreciation to the wide school community including teachers and partners.



JUN

2022

JAN/FEB

JUN



Vertical Marathon

The Vertical Marathon is an annual charitable house event where participants run laps around the school for house points. Runners sign up through a form that will be sent beforehand, and participants get to enjoy complimentary food and beverages after running. Donations to charities are made on the day itself.

SISHK Annual Musical

The Muzé Committee's annual musical is an excellent opportunity for students to showcase and enhance their singing, dancing and acting abilities. Through all the rehearsals, students get to work and make friends with other grades. Last year's musical was Beauty and the Beast.



- Inter-House Editing Comp
- Winter Ball
- AC Christmas Event
- Inter-House Dance

- Family Festival
- AV Game Show of the Year

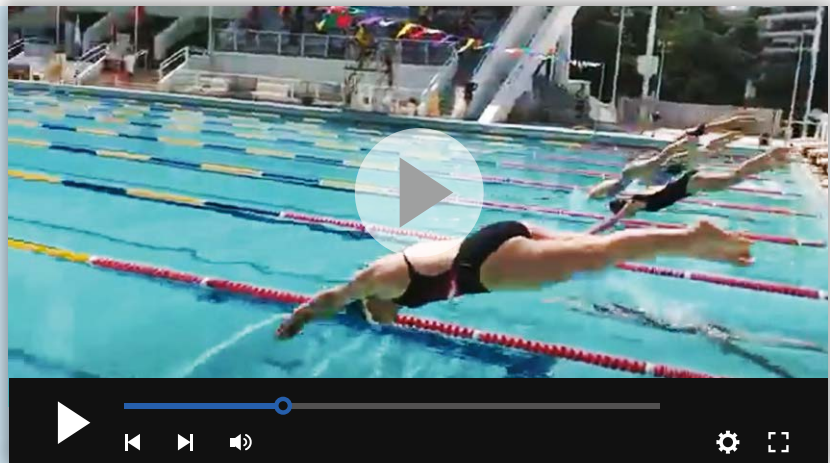


Fandom Friday



- STEAM Week
- Spirit Week
- Inter-House Music Competition

- Inter-House Swim Meet
- Humanities Week
- International Food Tasting



3.3: CROSS-CURRICULAR ACTIVITIES (CCA'S)



The purpose of Co-Curricular Activities is to allow students to discover their interests and talents. Through the CCAs, the school also aims to develop sound character values and competencies to prepare them for the future.

Below you will find some brief information relating to sport and non-sport CCA's, however if you would like to find out more, please click the link below or contact me via email: wojwenikkeith@singapore.edu.hk

CCA Information

Students who show promise in certain sporting areas are encouraged to pursue the sport on a competitive or recreational level. The school is a member of International School Sports Federation Hong Kong (ISSFHK) and Hong Kong Schools Sports Federation (HKSSF); our students regularly compete in the following sports: badminton, basketball, swimming, volleyball, netball and table tennis.

Term 1	Term 2	Term3	Term 4
Girls Volleyball (U14-U20)	Girls Basketball (U14-U20)	Girls Badminton (U14-U20)	Ultimate Frisbee (U14-U20)
Boys Volleyball (U14-U20)	Boys Basketball (U14-U20)	Boys Badminton (U14-U20)	
Cross Country (U14-U20)			
Boys & Girls Football (U14-U20)			
Tennis (U14- U20)			
Tae Kwon Do (U14-U20)			
Swimming (U14-U20)			
Girls Netball (U14-U20)			
Table Tennis (Interest and Competitive) (U14-U20)			

Should students want to engage in post season training within the sports identified below, they can contact our providers to join sessions hosted both on site and at other locations within Hong Kong throughout the year.

Provider	Sport Programs	Contact Information
Dream Sport Academy (DSA)	Badminton, Basketball, Volleyball	Ngassa Yannick info@dreamsports.com.hk www.drwamsports.com.hk www.instagram.com/dreamsportsacademy
Asia Pacific Soccer Schools	Football	Jason Li www.apsoccer.hk
ATA Tennis Aces	Tennis	Kristen Godridge info@atatennisaces.com www.atatennisaces.com

DSA Volleyball at SISHK

SPORTS COLOURS AWARD PROGRAM

[Sports Colours Rubric](#)

We want to nurture our students to foster a lifelong commitment to and excel in Sport and Physical Activities at the Secondary section so that they become physically educated individuals.

Objectives:

- To increase the number of students involved in Sports CCA's at the Secondary section
- To foster a culture of lifelong involvement in sport and physical activity across the SISHK Secondary section
- To promote character building and leadership qualities amongst the students
- To promote the love of sport and the joy of learning new sports
- To enhance the standard of sport and physical activities at School

Students who receive a sports colours award for performance and/or participation across the academic year will be invited to the annual SISHK Sports Colours Award Ceremony. The afternoon or evening will be an opportunity to celebrate the success of student-athletes and teams internally and externally.



NON-SPORT CCA's

Should students want to engage in activities outside of the domain of sport, SISHK offers a range of non-sports CCA's which students can sign up to.

Performing and Visual Arts	Language, Culture, Life Skills, STEM	
Chamber Ensemble	HK Battle of the Books Club	Chinese Drama Club
Visual Arts Club	Maths Cube	Chinese Reading Club
Photography Club	Spanish Club	Culinary Arts Club
Dance Club	Model United Nations (MUN)	Computer Club
Choir Club	Chinese Speech Club	Robotics Club
	Chinese Debate Club	Science Club



Model United Nations CCA



Culinary Arts CCA

PART 4: STUDENT WELL-BEING



Welcome to SISHK, I am Ms Connie Lau, Subject Head Student Well-being. The Student Well-being Department is part of the Student Development Department that partners the academic departments to look after the affective, behavioural and cognitive domains of learning in the school. The department is made up of two teams - the Learning Support Team and the School Counselling Team. They provide specialised support to students and teachers in and outside the classroom. The School Counsellors and the Learning Support teachers are situated on 2/F.

If you would like to speak to me directly, please email lauconnie@singapore.edu.hk.

LEARNING SUPPORT TEAM



The Learning Support Team consists of Learning Support Teachers who strives to help all students realise their full potential and provides support for individual students who may experience learning challenges. The team works in close partnership with teachers, parents and other external agencies to support students' learning. The team aims to provide expertise and resources to empower all students to achieve their goals and experience success. In some cases, the teachers conduct 1-1 session with students to

- Identify learning challenges
- Develop organisational skills
- Explore their own learning styles
- Evaluate time management and work prioritisation.

These sessions improve their self-management skills in school and beyond.

For more information, they can reach out to our Learning Support teachers:

- Ms Pat Huang, Senior Teacher (Learning Support) (huangpat@singapore.edu.hk)
- Ms Jocelyn Au, Learning Support Teacher (aujocelyn@singapore.edu.hk)
- Ms Emily Wang, Learning Support Teacher (wangemily@singapore.edu.hk)
- Mr Kidd Chung, Learning Support Teacher (chungkidd@singapore.edu.hk)

SCHOOL COUNSELLING TEAM

The School Counselling Team consists of two school counsellors who aspire to empower students to develop and enhance their abilities to cope with challenging emotions and improve their self-awareness and interpersonal skills. This is achieved through individual counselling sessions which aim at facilitating the student to modify their self-defeating thoughts or habits by replacing them with positive empowering ones. The sessions enable the students to recognize, manage and regulate their emotions effectively.

For more information, they can reach out to our School counsellors:



Ms Dona Pal

School Counsellor Coordinator

paldona@singapore.edu.hk



Ms Panigrahi Sudhasri

School Counsellor

panigrahisudhasri@singapore.edu.hk

STUDENT WELL-BEING EVENTS

From time to time the student well-being team will engage students in events which support their well-being, enhance confidence, a sense of community and health as a way to rest, relax and/or de-stress.



STUDENTS SUPPORTING STUDENTS

Peer Support Program

Peer Support is a wellbeing programme delivered by students. Peer Support Leaders (PSL's) promote being an active leader within the school community with a personal responsibility to help others. PSL's encourage wellbeing, including both mental and physical health.

The Peer Support programme may include:

- Assisting the transition from P6 into S1.
- Developing resilience in their peers.
- Increasing awareness of mental health and other health issues identified
- Engaging student-led activities for peers at lunchtime, recess and FTI.
- Providing a safe space for peers to come talk to PSL's about any issues or problems they may have.
- Developing relationships amongst peers.

Students who are interested in becoming a Peer Support Leader should apply in S2 around march-April time. If a student is interested in joining the Peer Support Programme they will go through the following application procedures.

1. Submit an application letter of interest to the Teacher in Charge by the proposed deadline (March-April)
2. Undertake a formal interview with the Teacher in Charge (May)
3. Appointment is made (May-June).



For more information students can approach Ms Javir Kau (Subject Head Peer Support) by emailing kaurjasvir@singapore.edu.hk





新加坡国际学校(香港)

SINGAPORE INTERNATIONAL SCHOOL (HONG KONG)

ESTD 1991